

LEVEL UP



2017 PRODUCT CATALOG

SOMERO 
ENTERPRISES, INC 

TABLE OF CONTENTS

| | | |
|----|-------------------------------|----|
| 5 | LIGHTWEIGHT SCREEDS | |
| | MINI-SCREED™ C | 6 |
| | COPPERHEAD® XD™ 3.0 | 8 |
| 10 | RIDE-ON SCREEDS | |
| | S-485 | 11 |
| | S-840 | 13 |
| | S-940 | 15 |
| 17 | BOOMED SCREEDS | |
| | S-10A | 18 |
| | S-15R | 20 |
| | S-22E | 22 |
| 24 | MATERIALS PLACEMENT | |
| | SP-16 | 25 |
| | STS-11M | 27 |
| 29 | SOFTWARE PACKAGES | |
| | 3-D PROFILER SYSTEM® | 30 |
| | SITESHape® | 32 |
| | FLOOR LEVELNESS SYSTEM® | 33 |
| 34 | REMANUFACTURED | |
| 36 | PARTS AND ACCESSORIES | |

Product specifications and information are subject to change.

HELPING YOU **GET THE WIN**

ABOUT US

Productivity. Concrete flatness. Jobsite efficiency. It's exactly what you get from Somero® Enterprises. We assemble laser-guided, technologically advanced machinery for horizontal concrete placement. And back it up with customer training, technical support, and continuous innovation.

We understand your success is our success and we're passionate about sharing our expertise around the globe.

GLOBAL HEADQUARTERS & TRAINING FACILITY

14530 Global Parkway
Fort Myers, FL 33913 U.S.A.
239.210.6519

PRODUCTION, OPERATIONS & SUPPORT

46980 Highway M26
Houghton, MI 49931 U.S.A.
906.482.7252

EUROPEAN SALES OFFICE

Broombank Road, Chesterfield Trading Estates
Derbyshire, UK 541 9QJ
+44 (0) 1246454455

NORTHEAST ASIA SALES OFFICE

Building No. 3, 2399 Zhaochong Highway
Qingpu District, Shanghai, China 201706
+86.21.60259766

INDIA SALES OFFICE

573, 3rd Floor, Main Road
Chirag, New Delhi – 110017, India
+91.984.1510958

MAKING YOU **SUCCESSFUL**

WHAT WE OFFER

Somero is completely dedicated to making your operation a success. We don't just sell you industry-leading equipment—we back it up with comprehensive support.

TRAINING

In addition to our Concrete Institute, we offer one-on-one training at your actual jobsite. So whether the rookie needs to get up to speed or your top performer wants to fine-tune his skills, we'll dispatch a trained professional to help you improve efficiencies, enhance jobsite safety, and cut costs on the job.

24/7 CUSTOMER SUPPORT

With Somero, you're backed by years of experience solving the toughest application and maintenance challenges that come with Laser Screed® concrete-leveling equipment. On top of that, every piece of our equipment is designed and built to provide maximum productivity and operation economy throughout its working life.

Now you can maintain that built-in value by taking advantage of our Somero Service Group. Offering a variety of services, our expert help is available 24 hours a day, seven days a week, 365 days a year. Because no matter the issue, we are here when you need us.

SERVICE WARRANTIES

Power through the toughest jobs with complete peace of mind by utilizing our extended warranty and service contracts.

Benefits include:

- Performance of all non-routine machine maintenance
- Immediate repair of small issues to prevent potential major breakdowns
- Comprehensive operator training
- Inventory management and restock suggestions for depleted emergency spare parts
- Optimal machine performance and productivity

THIRD-PARTY FINANCING OPTIONS

We believe your operation deserves the best. That's why we offer multiple opportunities for you to finance new or used equipment. Simply fill out an application and our sales team will work with you to discuss your options.

DON'T LET OUR SIZE
FOOL YOU



LIGHTWEIGHT SCREEDS

FOR YOUR SMALL-COMMERCIAL, UPPER-DECK, AND RESIDENTIAL PROJECTS

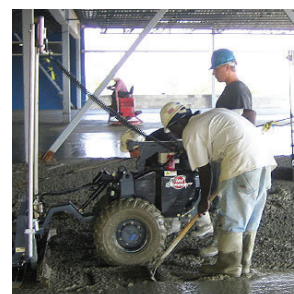
MINI SCREED™ C



Get superior productivity and flatness with the **Mini Screed™ C**. Designed for small commercial, upper deck, and residential projects – the Mini Screed™ C provides you and your customers with high quality, professionally produced floors at a fraction of the cost of conventional methods. With laser-controlled accuracy, this machine will screed to higher tolerances than traditional methods and works well with cement mixes of varying slumps.

FEATURES/BENEFITS:

- > Improved floor quality
- > Increased profitability
- > Column-Block Protection
- > Lightweight and easy-to-maneuver
- > Easy to set-up, break-down, and clean
- > Fits easily in the bed of a pickup truck
- > CBSSR Laser Control System
- > Single and dual-slope capabilities
- > Auto-Leveling head
- > Compatible with the 3-D Profiler System®
- > Somero Quick GradeSet System™

**SPECIFICATIONS:**

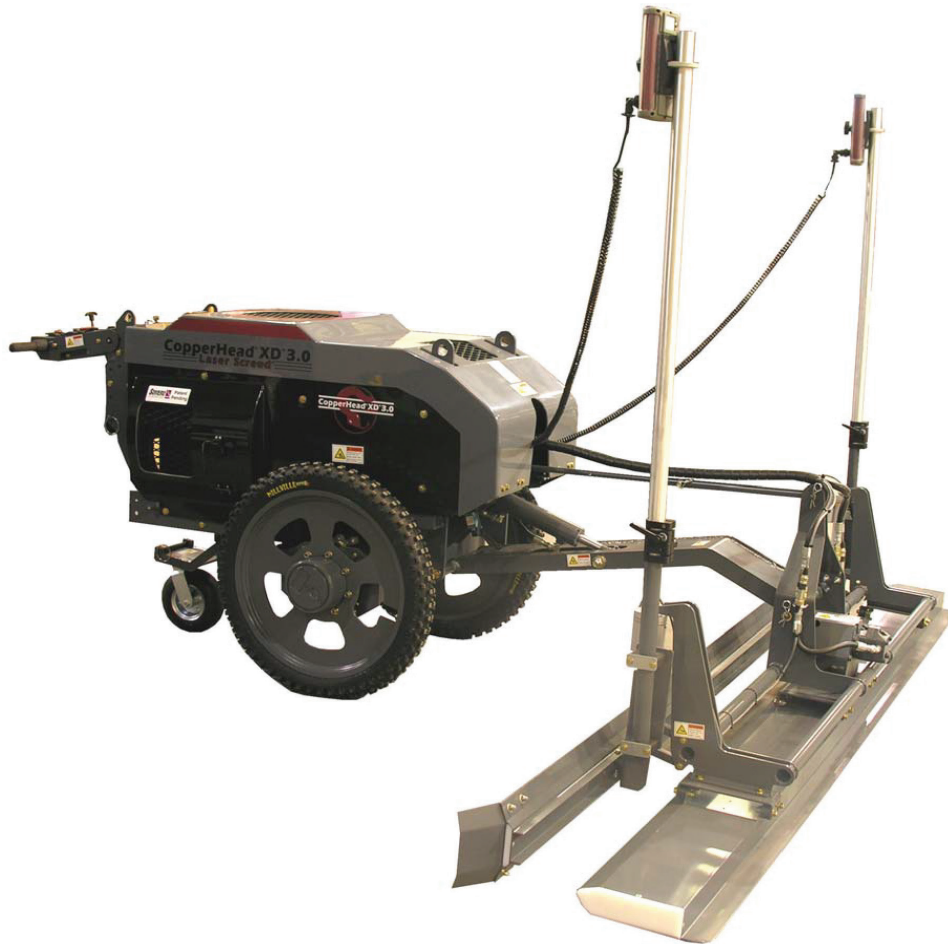
| | |
|-------------------|--|
| WEIGHT | 470 lbs / 213 kg |
| WIDTH | 30.5" / 77.5 cm |
| HEIGHT | 3' 7" / 1.1 m |
| LENGTH | 6' 4" / 1.9 m |
| ENGINE | 7.9 HP / 5.9 kW Honda GX240 |
| TIRES | High-float (standard) / Moto (optional) 6' |
| SCREED HEAD WIDTH | 8" / 2.0 m |

WHAT OUR CUSTOMERS SAY:

“Metcon uses Somero’s® Small Line equipment on nearly every flatwork pour. The improved flatness and production achieved by the Mini C or CopperHead® on grade or deck slab pours give them Most Valuable Equipment status.”

– Glen Garber, **Metcon**

COPPERHEAD® XD™ 3.0



Cut your concrete to a finished grade, screed it flat, and vibrate it smooth in a single pass. With the self-propelled **CopperHead® XD™ 3.0** you get superior productivity, labor savings and improved levelness with this improved 4th-generation walk-behind Laser Screed® machine. As with all Somero® models, the Copperhead® sets the grade automatically, allowing your crew to move quickly and efficiently. Ideal for slab-on-grade and elevated deck applications, but improves your performance over chaired rebar or mesh, in-floor heat and freezer slabs, including ice rinks.

FEATURES/BENEFITS:

- > Improved floor quality
- > Increased profitability
- > Fewer worker injuries
- > Somero Quick GradeSet System™
- > Column-Block Protection
- > CBSSR Laser Control System
- > Remote grade adjustments
- > Lightweight and easy to maneuver
- > Easy to set-up, break-down, and transport
- > Screeds flat, single, and dual slopes
- > Also compatible with the Somero 3-D Profiler System®

**SPECIFICATIONS:**

| | |
|------------------------------|---|
| WEIGHT | 850 lbs / 386 kg (with 10' / 3.0 m screed head) |
| WIDTH | 36" / 91 cm |
| HEIGHT | 3' 4" / 1.1 m |
| LENGTH | 9' / 2.7 m |
| ENGINE (STANDARD) | 14 HP / 10.4 kW Subaru EX40 |
| ENGINE (OPTIONAL) | Diesel Kohler KD440 |
| TIRES | Moto (standard) / High-float (optional) |
| SCREED HEAD WIDTH | 10' / 3.1 m |
| SCREED HEAD WIDTH (OPTIONAL) | 8' / 2.4 m |

WHAT OUR CUSTOMERS SAY:

“With the Copperhead we use 3 fewer men, cut 1-1/2 hours off our placing time effectively eliminating all overtime, and improve our floor quality. That’s a savings of over \$1,000 per day!”

– Jason Baiocco, *Precision Concrete Screeding*

LIKE LASER-GUIDED CHARIOTS



RIDE-ON SCREEDS

FOR YOUR COMMERCIAL AND UPPER-DECK PROJECTS

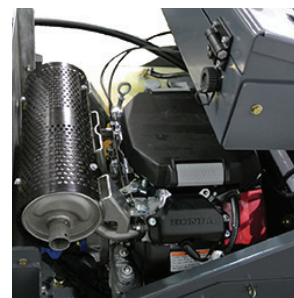
S-485



With incredible pulling power and the OASIS control system, the **S-485** is a ride-on four-wheel drive model that can screed in any direction and is easy-to-operate. With the versatility to be utilized as a Laser Screed® machine or a Laser Controlled Rake, the S-485 provides simple, fast, and accurate grade results whether you are screeding concrete or prepping the subgrade.

FEATURES/BENEFITS:

- > Improved floor quality
- > Increased profitability
- > Lightweight and versatile
- > Screeds on elevated slabs or on grade
- > Provides better performance in difficult applications, including chaired rebar or mesh, ice rinks, in-floor heat, and freezer slabs
- > 4-wheel drive
- > Column-Block Protection
- > OASIS Laser Control System
- > Auto valve calibration for consistent, unsurpassed performance
- > Somero Quick GradeSet System™
- > Compatible with the 3-D Profiler System®

**SPECIFICATIONS:**

| | |
|-------------------|--|
| WEIGHT | 1,107 lbs / 502 kg |
| WIDTH | 8' 4" / 2.5 m |
| HEIGHT | 4' 2" / 1.3 m |
| LENGTH | 9' / 2.7 m |
| ENGINE | 20.8 HP / 15.5 kW Honda GX630 |
| TIRES | Moto (standard) / High-float (optional) |
| SCREED HEAD WIDTH | 8' / 2.4 m 6' / 1.8 m Rake / Sub-Grade Head |

WHAT OUR CUSTOMERS SAY:

“Everyone should have an S-485. It is essential. What we like about the small screed is it doesn’t have an auger, so we don’t have to worry about going left or right; we can go any direction we want no matter how many penetrations are in the floor. If you have a job that needs high numbers but you can’t get an S-22E in there, you have to use a small screed. This 485 is state of the art.”

– Stevie Ray Lloyd, *Lloyd Concrete*

S-840



If you want higher Floor Levelness numbers, the **S-840** will provide you with better performance than any other mechanical method and is one of the most versatile concrete machines available. The S-840 has three options for your convenience: a fully automated self-leveling screed head, a raking head, and a subgrade head. The automated screed process increases profitability by providing fewer man hours per project, and its custom control system provides faster elevation and SLS response. The S-840 can screed up to 5,000 square feet per hour on average.

FEATURES/BENEFITS:

- > Improved floor quality
- > Increased profitability
- > Somero Quick GradeSet System™
- > Available with a Raking or SubGrade Head
- > Column-Block Protection
- > Live calibration for consistent, unsurpassed performance
- > Works well with slump as low as 3 ½" / 8.9 cm
- > Rotating Head Dollies optional
- > Compatible with the 3-D Profiler System®
- > On-site training available
- > OASIS Laser Control System

**SPECIFICATIONS:**

| | |
|------------------------------|-----------------------------------|
| WEIGHT | 1,548 lbs / 702 kg |
| WIDTH | 3' 6" / 1.1 m |
| LENGTH | 9' 7" / 2.9 m |
| ENGINE (STANDARD) | 20 ½ HP / 15 kW Subaru EH65 |
| ENGINE (OPTIONAL) | Diesel 24.8 HP Kubata DH902 |
| TIRES (STANDARD) | 38 PSI / 262 kPa |
| TIRES (OPTIONAL ATV) | 9.8 PSI / 67.6 kPa |
| SELF-PROPELLED | 4-Wheel Drive w/ Hydraulic Motors |
| SCREED HEAD WIDTH | 8' / 2.4 m or 6' / 1.8 m |
| RAKE/GRADING HEAD (OPTIONAL) | 8' / 2.4 m or 6' / 1.8 m |

WHAT OUR CUSTOMERS SAY:

“As a small company the S-840 was a big purchase for us, but a very satisfying and positive one. You might say you are too small a company to get one, but the reality is the smaller your company the higher percentage of your workforce the S-840 will replace, and so it still makes sense.

Also Somero® was wonderful to deal with making everything as easy as possible and giving us confidence that we will be looked after. They also referred us to lease companies of whom one has done multiple equipment deals for us now with excellent service. With the S-840 you don't only get a Laser Screed, you get Somero!”

– Warren Bauman, *Countryside Concrete*

S-940



The **S-940** provides unmatched versatility and simplicity with increased power and productivity! Available with a fully automated self-leveling screed head, raking/fine grade head, this powerful machine has fewer switches and an easy-access hinged console, making any job comfortable for your operator.

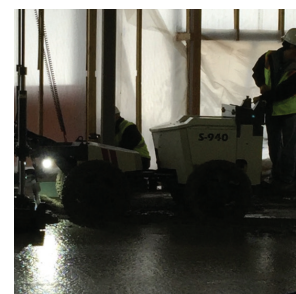
It has a foldable elevation beam that provides a narrower profile during transport with the added benefit of providing easy entry to jobsites. The off-set screed head provides less of an overlap per pass. With the option of a powerful diesel engine, this model is unstoppable.

FEATURES/BENEFITS:

- > Improved floor quality
- > Increased profitability
- > Somero Quick GradeSet System™
- > Auger Screed Head can screed on Chaired Mesh, Chaired Rebar, Heat Tubes, some slab-on-deck and more.
- > Raking/Fine Grade Head for raking concrete, finish grading or spreading material (sand, stone, etc.).
- > Auto valve calibration for consistent, unsurpassed performance
- > Rotating head dollies optional
- > Works well with slump as low as 3 ½" / 8.9 cm
- > On-site training available
- > Compatible with the 3-D Profiler System®
- > OASIS Laser Control System
- > Column-Block Protection

SPECIFICATIONS:

| | |
|------------------------------|-----------------------------------|
| WEIGHT | 1,653 lbs / 750 kg |
| WIDTH | 4' 9" / 1.5 m |
| LENGTH | 11' / 3.4 m |
| ENGINE (STANDARD) | 22 HP Subaru EH65 |
| ENGINE (OPTIONAL) | Diesel 24.8 HP Kubota DH902 |
| TIRES (STANDARD) | 38 PSI / 262 kPa |
| TIRES (OPTIONAL ATV) | 9.8 PSI / 67.6 kPa |
| SELF-PROPELLED | 4-Wheel Drive w/ Hydraulic Motors |
| SCREED HEAD WIDTH (STANDARD) | 8' / 2.4 m |
| SCREED HEAD WIDTH (OPTIONAL) | 10' / 3 m |
| RAKE/GRADING HEAD (OPTIONAL) | 9' / 2.7 m |



ONE-PASS POWERHOUSES



BOOMED SCREEDS

FOR YOUR LARGE, COMMERCIAL, AND SLAB-ON-GRADE PROJECTS

S-10A



With operator conveniences unmatched in the industry, the **S-10A** was engineered for productivity and convenience. Despite its compact size, the S-10A is highly productive, screeding 200 square feet per pass thanks to its 20' / 6 m telescopic boom and a patented, fully-automated, self-leveling, 10' screed head. Surprisingly lightweight, the S-10A Laser Screed® model can be easily transported.

FEATURES/BENEFITS:

- > Improved floor quality
- > Increased profitability
- > Column-Block Protection
- > OASIS Laser Control System
- > Operator positioned in center of machine for optimum 360° visibility
- > Compatible with the 3-D Profiler System®
- > Somero Quick GradeSet System™

SPECIFICATIONS:

| | |
|-------------------|------------------------------|
| WEIGHT | 7,500 lbs / 3,402 kg |
| WIDTH | 6' 8" / 2.0 m |
| HEIGHT | 6' 10" / 2.1 m |
| LENGTH | 23' / 7.0 m (transport mode) |
| ENGINE | 35 HP / 26 kW Kubota Diesel |
| SCREED HEAD WIDTH | 10' / 3.0 m |

OPTIONAL:

- Tool Box Storage Kit
- Pressure Washer Kit
- LED Light Kit
- Tire options
- Tripod
- Column Clamp
- GL622 Laser

**WHAT OUR CUSTOMERS SAY:**

“My guys can do this pour by hand today, but they wouldn’t want to see another one like it for a week. With this machine, we could do it again tomorrow. This machine is perfect for getting into smaller buildings where the larger screed would not fit. It pulls a ton of concrete.”

– *Booker Foundations & Flatwork*

S-15R



The **S-15R** is a sophisticated, high-performance machine with great value. It has a patented fully integrated self-leveling head assembly which plows, levels, and consolidates in just a single automated pass. The plow rakes down high concrete, filling in low spots, and the Somero® Quick Pass feature rakes down excessively high concrete without manual intervention. The hydraulically driven auger cuts the surface to grade and displaces excess concrete to the side via a double flight auger and the offset head design. At the same time, the flip-down plow extension pushes concrete further past the auger discharge, minimizing overlaps.

Our 20' telescopic boom reaches out over the concrete, allowing the operator to reach over chaired rebar and chaired mesh. Columns, pipes, and box outs are no problem due to the ability to rotate around these obstacles while screeding. The powerful hydraulic system controls the elevation of the auger to maintain grade for a much smoother surface compared to rigid mounting-style machines, even with very low slump concrete! The S-15R Laser Screed® model can be easily transported on a flatbed truck or tag-behind trailer.

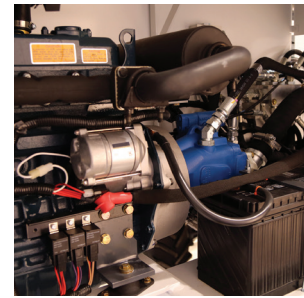
FEATURES/BENEFITS:

- > Improved floor quality
- > Increased profitability
- > Somero Quick GradeSet System™
- > OASIS Laser Control System
- > Column-Block Protection
- > 360° Machine Rotation with 2-Wheel, 4-Wheel, and Crab Steering
- > LCD display screen with built in diagnostics
- > Compatible with the 3-D Profiler System®

SPECIFICATIONS:

| | |
|---------------------------------|---|
| WEIGHT | 9,650 lbs / 4,377 kg with 10' / 3.0 m Screed Head |
| WIDTH | 6' 6" / 2.0 m |
| HEIGHT | 6' 9" / 2.1 m |
| LENGTH | 24' 4" / 7.4 m with 10' / 3.0 m Screed Head (transport mode) |
| ENGINE | 44.3 HP / 33 kW Kubota V1505 Turbo Diesel |
| SCREED HEAD WIDTH (STANDARD) | 10' / 3.0 m |
| SCREED HEAD WIDTH (OPTIONAL) | 8' / 2.4m |

Multiple options available; contact sales for more information



S-22E



Somero's **S-22E** is the most technologically advanced Laser Screed® model available in the world. It provides several options so you can build the Laser Screed® Machine you need. This model offers 360° machine rotation, a 20' / 6 m boom reach, and a single-touch stabilizer control. The optional roller is positioned at the bottom of the plow, which allows the cream to rise to the top while pushing down larger aggregates and fiber. This allows the operator to seal the concrete in a single pass, especially useful when dealing with very low slumps, large aggregate, or fibers.

We provide several machine options to meet your needs including: head size, roller plow, extra storage, and the Somero Floor Levelness System®. The first technology of its kind, the **Somero Floor Levelness System®** monitors Laser Screed® machine performance and reports issues. This helps keep operators and machines fine-tuned and ready for tough jobs.

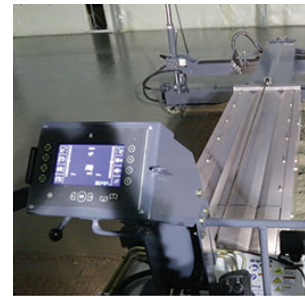
FEATURES/BENEFITS:

- > Full color LCD display with integrated diagnostics
- > Somero Floor Levelness System® (optional)
- > Column-Block Protection
- > OASIS Laser Control System
- > 360° Machine Rotation with 2-Wheel, 4-Wheel, and Crab Steering
- > Somero Quick GradeSet System™
- > Hydraulic oil pre-heater
- > Heated seat, hand, and foot areas
- > Automatic throttle
- > Automatic soft landing
- > Programmable Quick Pass
- > Hydraulic Pressure Washer (3,000 PSI / 207 bar)
- > Hydraulic screed head rotation

SPECIFICATIONS:

| | |
|------------------------------|--|
| WEIGHT | 13,600 lbs / 6,169 kg (with 12' / 3.7 m screed head) |
| WIDTH | 7' 2" / 2.2 m |
| HEIGHT | 8' 3" / 2.5 m |
| LENGTH | 27' 10" / 8.4 m (transport mode) |
| ENGINE (STANDARD) | 65 HP / 48.5 kW Cummins Diesel QSS 2.8, Final Tier 4 |
| ENGINE (OPTIONAL) | 74 HP / 55.0 kW Deutz Turbo Diesel, Tier 4 |
| SELF-PROPELLED | Standard |
| SCREED HEAD WIDTH (STANDARD) | 12' / 3.7 m (standard) |
| SCREED HEAD WIDTH (OPTIONAL) | 14' / 4.3 m |

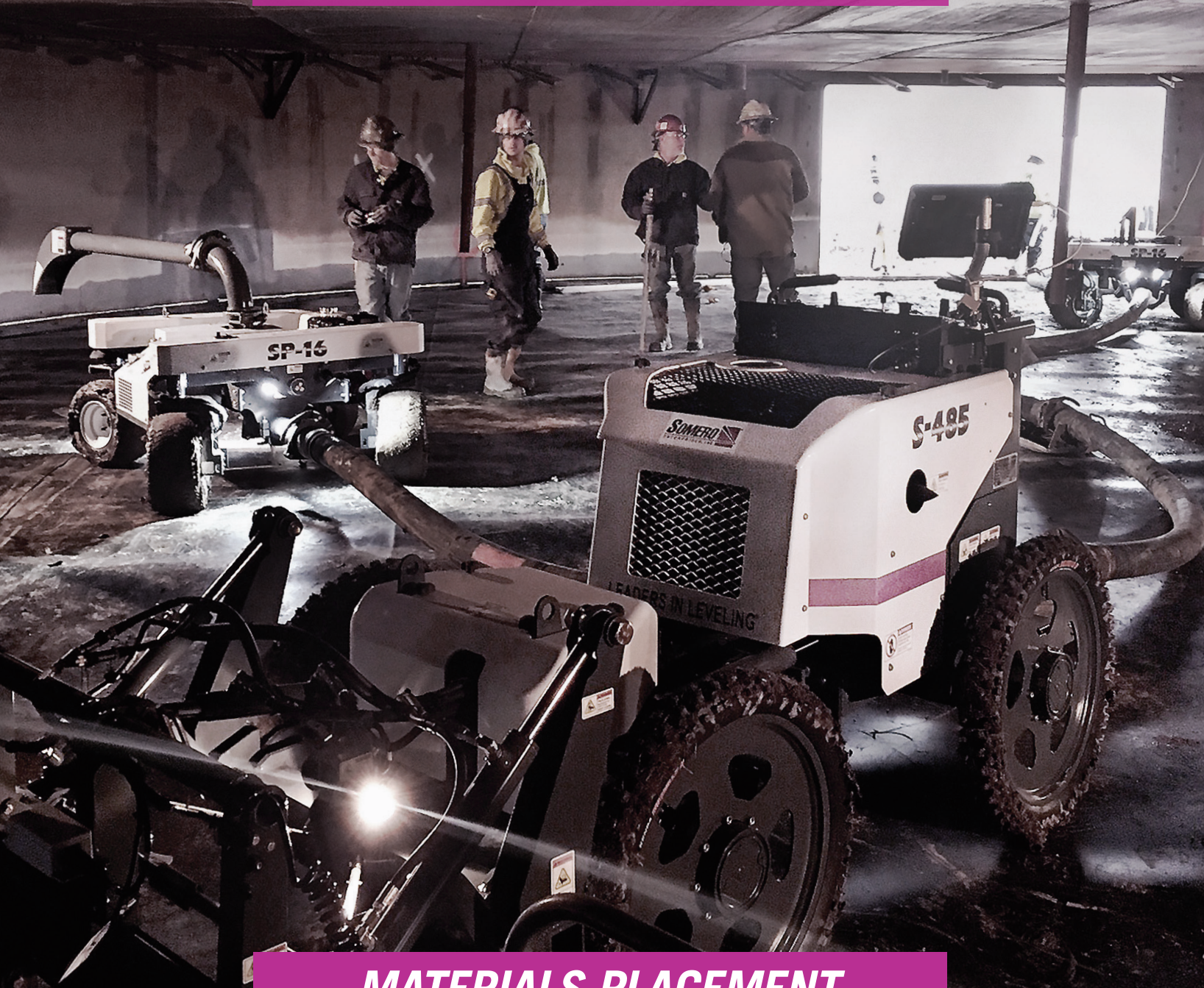
- 12' / 3.7 m or 14' / 4.3 m Roller Plow
- Extra Lower-Frame Storage Compartment
- Tire options
- Spare parts kits

**WHAT OUR CUSTOMERS SAY:**

"The S-22 is so fluid and a lot easier to operate. Machine responds rapidly to every movement with no hesitation. IT'S THE BEST MACHINE I'VE RUN!"

— Jack Mills, **C & C Plumbing Services, Inc.**,

BREAK RECORDS, NOT YOUR BACK



MATERIALS PLACEMENT

FOR PLACING CONCRETE OR TOPPING SAFER AND MORE EFFICIENTLY

SP-16



If you want to make using concrete pump hoses an even more efficient process, you need the SP-16 Line-Pulling and -Placing System. These remote-controlled hose-handlers are packed with powerful engines and load-sensing variable-displacement hydraulics that move lines with ease. Besides being the most nimble option on the market, these machines are sure to enhance productivity, create labor savings, and reduce the risk of injury that comes with moving pump hoses by hand.

FEATURES/BENEFITS:

- > Remote-control operation utilizes simple AA batteries
- > Intelligent Steering adjusts steering angle to prevent stress and damage to components
- > Steering capabilities include 2 wheel, 4 wheel, and crab-style options
- > Load-sensing variable-displacement hydraulics provide optimal power
- > Return-to-center steering automatically realigns wheels
- > Conveniences include LED work lights, tie-down points for transport, and various clamping locations
- > Jobsite safety is increased

SPECIFICATIONS:

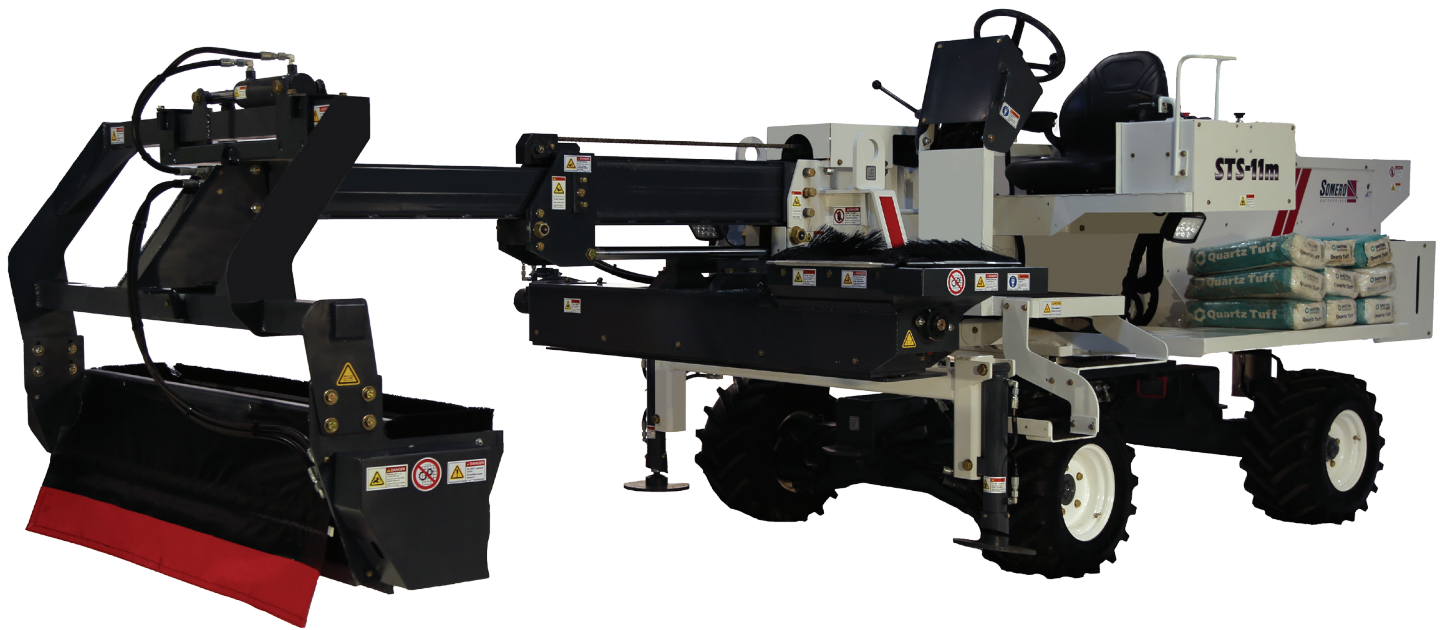
| | |
|------------------|---|
| TOTAL WEIGHT | Puller: 1,040 lbs / 471.7 kg Placer: 1,150 lbs / 521.6 kg |
| WIDTH | 51.5" / 1.3 m |
| LENGTH | Puller: 56.25" / 1.4 m Placer: 66" / 1.7 m |
| HEIGHT | Puller: 41.5" / 1.1 m Placer: 44.5" / 1.1 m |
| GROUND CLEARANCE | 7"-7.25" / 0.178-0.184 m |
| STEERING ANGLE | 180 deg. |
| ENGINE | 11.7 hp / 8.7 kW Honda GX390 |
| TIRES (STANDARD) | Carlisle 18x8.5 |
| CLAMP OPENING | 8.5" / 10.22 m |

**WHAT OUR CUSTOMERS SAY:**

“Safety is one of our number-one priorities, and these machines definitely decrease the risk of injury. They have helped me complete jobs faster and with fewer people, and are so easy to use.”

– Mike Kies, **CG Schmidt**

STS-11M



Disperse a wide variety of shake-on toppings with the **STS-11M** Topping Spreader. Its uniquely versatile design features a low dust loading technology with Inlet Hopper brushes, storage for up to twenty 50-lb. / 22.7 kg bags, and a compact machine size for easier transporting. The STS-11M Topping Spreader provides spreading accuracy that allows you to distribute shake-on toppings from fine materials to trap rock.

FEATURES/BENEFITS:

- > Increased profitability
- > Superior spreading accuracy
- > Easy to use
- > Improved operator visibility
- > Easy to maintain and service
- > Floor Levelness and Site Shape
- > On-Site training available
- > 2-Wheel, 4-Wheel, or Crab Steer

SPECIFICATIONS:

| | |
|---------------------|-----------------------------|
| WEIGHT | 9,000 lbs / 4,082 kg |
| WIDTH | 7' 2" / 2.2 m |
| LENGTH | 16' 3" / 4.9 m |
| ENGINE | 35 HP / 26 kW Kubota Diesel |
| SELF-PROPELLED | Standard |
| SPREADER HEAD WIDTH | 6' / 1.8 m |

WHAT OUR CUSTOMERS SAY:

“The STS-11M improved the productivity and quality of the concrete team reducing labor cost and workers' fatigue. The optimized distribution of the hardener guaranteed a uniform and homogeneous layer. Besides the increase of productivity, the superior distribution of the aggregate increased our F numbers and reduced problems found with traditional methods. We are very pleased with Somero Enterprises STS-11M Topping Spreader.”

– Geremias Felipe Junior, *ALPHAPISO, Brazil*

THE FIRST AND THE FUTURE



SOFTWARE PACKAGES

THE LATEST AND MOST POWERFUL ADVANCEMENTS IN CONCRETE—**EVER**

3D-PROFILER SYSTEM[®]



The new and improved Somero[®] 3-D Profiler System[®] allows automatic, accurate paving of contoured sites using Somero Laser Screed[®] equipment. It's ideal for use on parking lots, loading-dock areas, service ramps, and driveways. It's also being used to white-top and repair roadways, runways, taxiways, and bridges. Thanks to this system, slope and elevation changes are now completely practical and cost-effective to achieve.

Not only is the system easy to learn and use, it is compatible with Somero Laser Screed machines from both our small and large product lines. The 3-D Profiler System comes complete with all necessary components to get you profitably paving immediately.

Do you currently utilize Trimble® Business Center for other aspects of your workflow? 3-D Profiler System allows you to take advantage of the Somero.nod export feature, which creates a file that includes both points and surfaces. The file can be opened directly with V14 and newer 3-D Profiler software. Surfaces are created automatically, which saves time and reduces potential errors that could occur if the surfaces were created manually.

HARDWARE FEATURES/BENEFITS:

- > Tablet increases ease of use
- > Integrated radio reduces cords and cables
- > Simplified machine installation requires fewer parts and components
- > Tablet attaches to grade rod for surveying

SOFTWARE FEATURES/BENEFITS:

- > Intuitive software simplifies daily use and training
- > Grade Checking Module saves time and ensures project accuracy
- > Project Layout feature eliminates need for Trimble hardware-software and returns significant cost reductions



WHAT OUR CUSTOMERS SAY:

“Projects typically come with enough headaches—anything that can make my life easier is more than welcomed. This system is a dream come true. I can put it in the hands of any one of my operators and trust that the job will turn out exactly as planned. We’d never work any other way now that we have it!”

— James Coy, *President of James K. Coy Construction, Inc.*

SITESHape™



Ever wish that you could have the simplicity of the **Somero® 3-D Profiler System®** for your motor grader? Now it's possible with SiteShape™, which takes the same field-proven technology and adapts it to simplify your fine-grading applications.

This system allows for grade shaping automatically using your motor grader, dozer, or other grading machine to meet the demands of real three-dimensional grade shaping.

Ideal for use on parking lots, loading dock areas, service ramps, and driveways—it can also be used on roadways, runways, taxiways, or any multi-sloped surface. Slope and elevation changes are now simple, practical, and cost-effective to achieve. The SiteShape™ System is compatible with most makes and models of grade cutting machines.

WHAT OUR CUSTOMERS SAY:

“Somero’s equipment has allowed our company to compete on larger projects, which helped us, and other divisions of our company grow. I can definitely say the investment was a good one.”

— Len Swederski, President of **Swederski Concrete Construction**

FLOOR LEVELNESS SYSTEM[®]

Is your Grade Control System running at its best? Are you having issues with F numbers but don't know where to start? Are you interested in becoming a more experienced operator?

Somero Enterprises is proud to announce the **Somero Floor Levelness System[®]**. The first technology of its kind, the System monitors your Laser Screed[®] machine and operator performance, then reports alert percentages of issues. What does this mean? **You can now receive instant feedback on the job if screed performance is decreasing.**

The system is capable of detecting small changes which are typically not perceptible to the operator, making the system ideal for detecting issues with minimal operator effort and allowing them to adjust accordingly.



FEATURES/BENEFITS:

- > **TRAINING TOOL FOR NEW AND EXPERIENCED OPERATORS:** New operators can learn proper techniques for stabilizer adjustment, head touchdowns, and boom speed. Continuous feedback is provided reinforcing concepts and alerting the operator
- > **MAXIMIZE LASER SCREED PERFORMANCE:** Experienced operators can fine-tune their techniques and know when to adjust valve speeds to optimize the screeding performance for that day's productivity.
- > **HELP ISOLATE ISSUES WITH FLOOR QUALITY:** Floor quality can be challenging to understand because the floor is measured after all aspects of the pour are complete. Some processes before and after screeding can improve floor quality while others can lower it. The advantage of the Floor Levelness System[®] is that if the scoring system remains high then the screed is working well. Thus the question of what else has changed can be asked. This helps isolate changes from pour-to-pour to better understand what impacts floor quality. The entire day's data can be downloaded to generate a summary report or a detailed analysis.



ROUND-TWO READY



REMANUFACTURED

FACTORY-CERTIFIED, LABOR-SAVING TECHNOLOGY—AT AN EVEN BETTER PRICE

REMANUFACTURED



Somero Enterprises, Inc.®, the worldwide leader in concrete placing and leveling equipment, is pleased to offer a selection of **Factory Certified Remanufactured Equipment**. If a new piece of equipment is just a bit out of reach, why not consider remanufactured? You will receive Somero's labor-saving technology at an affordable price and have the peace of mind knowing that it has been completely remanufactured. All Factory Certified Remanufactured Equipment comes with a one-year warranty, training, and C.E. certification.

All large-line remanufactured equipment, including the S-240, SXP®, and S-160 models, will be completely upgraded to Somero's technologically advanced OASIS Laser Control System.

To begin achieving higher quality floors that Somero is known for, you can view our current inventory of remanufactured equipment on our website at Somero.com or contact Somero Inside Sales at +1-239-210-6519.



**BE PREPARED—NOT
PRESSURED**

PARTS AND ACCESSORIES

REPLACEMENT PARTS AND PERFORMANCE PACKAGES

CONTACT US

TO PLACE YOUR ORDER TODAY OR TO SPEAK TO A PARTS SPECIALIST REGARDING ANY OF THE COMPONENTS LISTED IN THIS CATALOG

PLEASE CALL:

USA: +1 (906) 482-7252, Option 4
8:30 – 5:00 PM Eastern Standard Time
Email: Support@Somero.com

UK: +44 (0)1246 454455
9:00 – 5:00 PM GMT
UKService@Somero.com

China: +86 2160259766
9:00 – 5:00 PM CST
Email: china_cs@Somero.com



**WE ARE PASSIONATE ABOUT
YOUR SUCCESS!**



PO Box 309
 46980 State Hwy M-26
 Houghton, MI 49931
 (906) 482-7252 Ext. 4
 (906) 483-2774 fax
 support@somero.com

PARTS QUOTE FORM

| Customer Name: | | Date: | |
|------------------|-------------|------------------|--|
| Ship To Address: | | Mach. Model: | |
| Add'l Addr: | | Serial #: | |
| City: | | P.O. #: | |
| State | | | |
| Zip: | | | |
| Contact: | | | |
| Phone: | | | |
| QTY | Part Number | Description | |
| | | | |
| | | | |
| | | | |
| | | | |
| | | | |
| | | | |
| | | | |
| | | | |
| | | | |
| | | | |
| | | | |
| Remarks | | Ship Via: | |
| | | UPS Ground | |
| | | UPS NDA | |
| | | UPS 2nd Dar Air | |
| | | UPS 3-Day Select | |

OASIS UPGRADE

Somero® proprietary software/hydraulic system integrated with state of the art controller/sensing hardware to provide cutting edge control performance

Upgrades available for the following models with the listed control systems:

- All SXP's (Converts from GCS21)
- All S240's (Converts from PA and GCS21)
- All S160's (Converts from PA and GCS21)
- All S100's (Converts from PA and GCS21)
- SXP-D's (Converts from GCS21 and GCS210)



System Features/Options

- Somero® Designed Control System
- Enhanced Screeding Accuracy
- Operator Friendly
- Current Across All New Screed Models
- Highly Configurable
- Increased Dependability
- 3D Compatible
- Software Upgradeable
- Reduced System Components

Installed In-house and On-site
(Pricing Varies by Installation Method)

Machine Components: Controller, Operator Display, Laser Receivers, Dual Axis Angle Sensor, Hydraulic Control Valve, and Remote Switch Box (Except SXP)

MSC Gold and Silver Kits

PREPARATION IS KEY:

Contained in a durable waterproof carry case, the Emergency Support Kits have been carefully designed to assist easy fix solutions provided by Somero® Engineers when pressure is at its greatest. Since introduction, the kits have proved invaluable in avoiding machine downtime, unplanned stop ends, and pour cancellations, providing a cheap insurance and peace of mind to our customers.



SILVER KIT

700501309

Rugged Waterproof Carry Case with foam inserts, Control Box, Receiver Coil Cord, Clamp Assembly, Air Filter, Isolators, Linear Actuator, Hex Bit, Velcro, Plow Links, Plow Wings, and Hydraulic Filter Cartridge.

GOLD KIT

700501310

Rugged Waterproof Carry Case with foam inserts, Control Box, Receiver Coil Cord, Clamp Assembly, Air-Filter, Isolators, Hex Bit, Velcro, Various Switches and covers, Relays, Linear Actuator, Spare Receiver, Drive Seals, and Spark Plug.



MINI SCREED C™

Laser Gear Accessories

| | |
|-------------------------|-----------|
| SSR Receiver | 711301054 |
| CBSSR Control Box | 710101233 |
| SSR Coil Cord | 710601119 |

Head Accessories

| | |
|---------------------------------|-----------|
| Head Lift Actuator | 710101240 |
| Head Level Actuator | 710101466 |
| Linear Actuator with Hood | 710101465 |
| PQ Level Sensor | 710101143 |
| Limit Switch Assembly | 710101123 |
| Electric Vibrator Motor | 710101238 |
| Vibrator Plate | 700301297 |

Engine Accessories

| | |
|----------------------|-----------|
| 6HP Air Filter | 740501028 |
| Spark Plug | 770401058 |



SSR Receiver



CBSSR Control Box



PQ Sensor



Head Lift Actuator



Linear Actuator with Hood



MINI SCREED C™

Wheels and Accessories

| | |
|---|-----------|
| ATV Tire/Rim Assembly | |
| Left | 700801048 |
| Right..... | 700801047 |
| Motorcycle Wheel Assembly..... | 700801053 |
| Tire MX 14"..... | 700801040 |
| Tube MX 14"..... | 700801041 |
| Wheel MX 14"..... | 720505059 |
| Flanged Wheel Extension..... | 720701087 |
| Wheel Guard Seal Outer, 5 ft for 2 wheels | 740901004 |
| Wheel Guard Seal Inner, 1.25 ft for 2 wheels..... | 740901005 |

Jobsite Accessories

| | |
|-----------------------|-----------|
| Lift Harness 28"..... | 740801545 |
| Lift Harness 48"..... | 740801546 |
| Mini Screed Rake..... | 741101023 |
| Pump Sprayer..... | 740801737 |



Wheel Guard Seal Inner



Wheel Guard Seal Outer



Tube MX 14"



MX Wheel Assembly

XD3 Gold and Silver Kits**PREPARATION IS KEY:**

Contained in a durable waterproof carry case, the Emergency Support Kits have been carefully designed to assist easy fix solutions provided by Somero® Engineers when pressure is at it's greatest. Since introduction the kits have proved invaluable in avoiding machine downtime, unplanned stop ends, and pour cancellations, providing a cheap insurance and peace of mind to our customers.

**SILVER KIT****700501317**

Rugged Waterproof Carry Case with foam inserts, CBSSR, Control Box, Linear Actuator w/ Hood, Limit Switch Assy, Vibrator Motor, Various Hydraulic Hoses, Vibrator Bearings, Neutral Safety Switch, Various Relays, Actuator Cord, Harness to Disconnect, Actuator Cord, Actuator to Disconnect, Coil Cord, SSR, Various Switches, E Stop, Bushing, Liftarm Mount, Vibrator Isolators, Clamp Assemblies, Knob, SSR Mast Clamp, Velcro, Dual Lock, 1" Hydraulic Filter Element, Engine Air Filter, and Spark Plug.

GOLD KIT**700501318**

Rugged Waterproof Carry Case with foam inserts, CBSSR, Control Box, Linear Actuator w/ Hood, Limit Switch Assy, Vibrator motor, Various Hydraulic Hoses, Vibrator Bearings, Neutral Safety Switch, Various Relays, Actuator Cord, Harness to Disconnect, Actuator Cord, Actuator to Disconnect, Coil Cord, SSR, Various Switches, E Stop, Bushing, Liftarm Mount, Vibrator Isolators, Clamp Assemblies, Knob, SSR mast clamp, Velcro, Dual Lock, 1" wide, Hydraulic Filter Element, Engine Air Filter, Spark Plug, PQ Level Sensor Assy, and Spare Receiver.

**COPPERHEAD® XD3****Laser Gear Accessories**

| | |
|-------------------------|-----------|
| SSR Receiver | 711301054 |
| CBSSR Control Box | 710101233 |
| PQ Level Sensor | 710101143 |
| SSR Coil Cord | 710601119 |

Electrical Accessories

| | |
|--|-----------|
| Battery..... | 710401133 |
| Limit Switch Assembly..... | 710101123 |
| Relay, 50 Amp (Power/Start) | 20901 |
| MicroRelay, (SideLock/TrackAssist) | 710401139 |
| Voltage Regulator..... | 710401170 |

Hydraulic Accessories

| | |
|---------------------------|-----------|
| Hydraulic Filter..... | 750701073 |
| Side Lock Cylinder | 750101026 |
| Head Lift Cylinder..... | 750101050 |
| Kick Stand Cylinder | 750101056 |
| Hydraulic Pump..... | 750901005 |



PQ Sensor



Linear Actuator with Hood



CBSSR Control Box



SSR Receiver



Relay 50 Amp



Vibrator Motor



Vibrator Shaft



Vibrator Bearings



Vibrator Isolator

COPPERHEAD® XD3

Head Accessories

| | |
|--|-----------|
| Vibrator Motor | 750801042 |
| Vibrator Shaft Weldment | 720601774 |
| Vibrator Bearing 1" 2 Bolt | 20133 |
| Vibrator Bearing 2 Bolt SFT-12T | 740101044 |
| Vibrator Isolator | 740801413 |
| Vibrator Beam | 700601066 |
| Vibrator Mount Plate | 720503300 |
| Head Weldment Support | 720601736 |
| Linear Actuator with Hood | 710101465 |
| Actuator Cord Disconnect to Harness | 710601104 |
| Actuator Cord Disconnect to Actuator | 710601105 |

Wheels and Accessories

| | |
|--|-----------|
| MX Wheel Assembly | 700801016 |
| MX Tire only | 700801011 |
| MX Tube only | 700801010 |
| MX Rim only | 720506821 |
| ATV Tire Assembly | |
| Left | 700801042 |
| Right | 700801043 |
| ATV Rim only | 720601626 |
| ATV Tire only | 740801313 |
| Flanged Wheel Extension | 720701087 |
| Wheel Guard Seal Outer, 5ft for 2 wheels | 740901004 |
| Wheel Guard Seal Inner, 2.5ft for 2 wheels ... | 740901005 |

Engine Accessories

| | |
|-----------------------------------|-----------|
| 13HP Air Filter EH41 Engine | 740501011 |
| 14HP Air Filter EX40 Engine | 740501038 |



ATV Tire Only



MX Tire Only



Wheel Guard Seal Inner



Wheel Guard Seal Outer

S-485 Gold and Silver Kits

PREPARATION IS KEY:

Contained in a durable waterproof carry case, the Emergency Support Kits have been carefully designed to assist easy fix solutions provided by Somero® Engineers when pressure is at it's greatest. Since introduction, the kits have proved invaluable in avoiding machine downtime, unplanned stop ends, and pour cancellations, providing a cheap insurance and peace of mind to our customers.



SILVER KIT

700501306

Rugged Waterproof Carry Case with foam inserts, Various Hydraulic Hoses, Grease Fittings, Spare Joystick, Operator Presence Switch, Vibrator Motor, Estop, Bushings, Bearings, Hydraulic Filter, and Engine Air Filter.

GOLD KIT

700501304

Rugged Waterproof Carry Case with foam inserts, Various Hydraulic Hoses, Grease Fittings, Spare Joystick, Operator Presence Switch, Vibrator Motor, Estop, Bushings, Bearings, Hydraulic Filter, Engine Air, Oil & Fuel Filters, Spark Plug, Extra Hydraulic Hoses, Pressure Gauge, Spare Receiver, Electrical Relay, and Inner and Outer Drive Hub Seals.



S-485

Laser Gear Accessories

| | |
|--------------------------------|-----------|
| AS212-s Dual Axis Sensor | 711301068 |
| SSR2 Receiver | 711301072 |
| SSR Coil Cord | 710601119 |

Electrical Accessories

| | |
|--------------------------------|-----------|
| Dash Display | 710101486 |
| Paddle Joystick | 710101297 |
| Timed Raise Lower Switch | 710101299 |
| E-Stop | 711601068 |
| 40/30 Amp Relay | 710401336 |
| Operator Presence Switch | 710101298 |

Engine Accessories

| | |
|-------------------|-----------|
| Fuel Filter | 770401101 |
| Oil Filter | 770401102 |
| Air Filter | 710101299 |
| Spark Plug | 770401104 |



SSR2 Receiver



Paddle Joystick



E-Stop



Dash Display



S-485

Head Accessories

| | |
|---------------------------------|-------------|
| Raking/Dirt Head..... | 0s485Rake |
| 3D Raking/Dirt Head | 0s485rake3D |
| Electric Vibrator Motor..... | 710101348 |
| Weldment Head Pin..... | 720602978 |
| Vibrator Plate Assembly | 700301357 |
| Vibrator Motor Mount Plate..... | 720507564 |
| Vibrator Linkage Assembly..... | 700601138 |
| Vibrator Isolator | 740801413 |

Hydraulic Accessories

| | |
|--------------------------|-----------|
| Hydraulic Pump..... | 750901037 |
| Elevation Cylinder | 750101095 |
| SLS Cylinder | 750101096 |

S-840 Gold and Silver Kits

PREPARATION IS KEY:

Contained in a durable waterproof carry case, the Emergency Support Kits have been carefully designed to assist easy fix solutions provided by Somero® Engineers when pressure is at it's greatest. Since introduction the kits have proved invaluable in avoiding machine downtime, unplanned stop ends, and pour cancellations, providing a cheap insurance and peace of mind to our customers.



SILVER KIT

700501282

Rugged Waterproof Carry Case with foam inserts, Various Hydraulic Hoses, Spare Joystick Assembly, Various Dashboard switches, Vibrator Motor, Auger Motor, Valve, SLS Control, Hydraulic Filter, Oil Filter, and Air Filter.

GOLD KIT

700501308

Rugged Waterproof Carry Case with foam inserts, Various Hydraulic Hoses, Spare Joystick, Various dashboard switches, Vibrator Motor, Auger Motor, Valve SLS Control, Hydraulic Filter, Oil Filter, Air Filter, Spare Switch Covers, Spare Laser Receiver, Additional Switches, Timed Lower/Raise Switch, Head Pins, Auger Bearings, Auger Guards, Compression Springs, Threaded Rod, Inline Fuel Filter, Cotter Pin, Vibrator Isolator Mounts, Split Rings, Grease Fittings, Drive Motor Seals (inner and outer), Head lift Valve, Spark Plug, Pressure Gauge, Hydraulic Fittings, Cotter Pin, and Vibrator Motor Key.



S-840

Laser Gear Accessories

| | |
|--------------------------------|-----------|
| SSR2 Receiver | 711301072 |
| SSR Coil Cord | 710601119 |
| AS212-S Dual Axis Sensor | 711301068 |
| Dash Display | 710401319 |

Electrical Accessories

| | |
|-------------------------------------|-----------|
| Paddle Joystick..... | 710101297 |
| Timed Raise Lower Switch..... | 710101299 |
| E-Stop | 711601067 |
| Micro Relay - Vib/Propel/Power..... | 710401139 |
| Operator Presence Switch..... | 710101298 |
| Voltage Regulator..... | 710401241 |

Engine Accessories

| | |
|--------------------------|-----------|
| Inline Fuel Filter | 740501037 |
| OilFilter | 770401023 |
| Air Filter | 770401022 |
| Spark Plug..... | 770401076 |



Electric Vibrator Motor



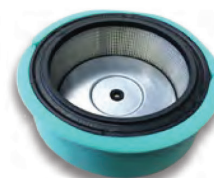
SSR2 Receiver



Paddle Joystick



AS212-S Dual Axis Sensor



Air Filter



S-840

Head Accessories

| | |
|--|-------------|
| 8ft Auger Head Assembly | Oshead840-8 |
| Dirt Head Assembly | Os840dirt |
| Dirt Head with 3D X Slope Sensor | Os840dirt3d |
| 8ft Double Flight Auger | 720602787 |
| Auger Motor | 750801052 |
| Auger Bearings | 740101090 |
| Auger Bearing Guards | T1145 |
| Compression Springs | 20959 |
| Electric Vibrator Motor | 710101348 |
| Vibrator Plate | 700301357 |
| Vibrator Motor Mount Plate | 720507564 |
| Dolly Wheel Head Rotate Kit | 700301425 |
| Vibrator Linkage Assembly | 700601138 |
| Auger Weldment Plow Mount | 720602557 |
| Head Pin D Handle | 720602640 |

Hydraulic Accessories

| | |
|--------------------------------|-----------|
| Hydraulic Filter | 750701073 |
| SLS Cylinder | 750101070 |
| Pivot Elevation Cylinder | 750101079 |
| Fixed Elevation Cylinder | 750101078 |
| Hydraulic Pump | 750901015 |



Auger Bearing



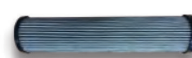
Auger Guard



Compression Spring



SLS Cylinder



Hydraulic Filter



Auger Motor



8ft Auger Head Assembly



S-840

Wheels and Accessories

| | |
|--|-----------|
| Dual Wheel Kit..... | 700301395 |
| MX Wheel Assembly..... | 700801055 |
| MX Tire only..... | 700801011 |
| MX Tube only..... | 700801010 |
| MX Rim only..... | 720601478 |
| ATV Tire Assembly | |
| Left..... | 700801042 |
| Right..... | 700801043 |
| ATV Rim only..... | 720601626 |
| ATV Tire only..... | 740801313 |
| Flanged Wheel Extension..... | 720701087 |
| Wheel Guard Seal Outer, 5ft for 2 wheels..... | 740901004 |
| Wheel Guard Seal Inner, 2.5ft for 2 wheels..... | 740901005 |



MX Tire Only ATV Tire Only Tube MX
Flanged Wheel Extension Wheel Guard Seal Outer Wheel Guard Seal Inner

S-840 Dual Wheel Kit

The Benefits

Weight Distribution (with 200 lb operator)

- Base Machine, 1,710 lbs total: 1,290 lbs on front wheels (645 lbs per tire)
420 lbs on rear wheels (210 lbs per tire)
- Machine w/ Kit, 1,924 lbs total: 1,343 lbs on front wheels (336 lbs per tire)
581 lbs on rear wheels (291 lbs per tire)

Pulling Power (with 200 lb operator)

- Base Machine: 920 lbs
- Machine with Kit: 1,120 lbs, which is a 22% increase



S-940

Laser Gear Accessories

| | |
|--------------------------------|-----------|
| SSR2 Receiver | 711301072 |
| SSR/SSR2 Receiver Cable..... | 710601119 |
| AS212-S Dual Axis Sensor | 711301068 |
| Dash Display..... | 710101528 |

Electrical Accessories

| | |
|-------------------------------|-----------|
| Paddle Joystick..... | 710101297 |
| Timed Raise Lower Switch..... | 710101522 |
| E-Stop | 711601067 |
| Relay, Picker SPDT Cube..... | 710401336 |
| Switch | 710101521 |
| Voltage Regulator..... | 710401241 |

Engine Accessories

| | |
|--------------------------|-----------|
| Inline Fuel Filter | 740501037 |
| Oil Filter | 770401023 |
| Air Filter | 770401022 |
| Spark Plug..... | 770401076 |

Diesel Accessories

| | |
|--|--------------|
| Filter Element, Air, Kubota DH902 | 770401111-C0 |
| Filter – Fuel, Kubota DH902 | 770401112-C0 |
| Muffler, Kubota DH902..... | 770301025-C0 |
| Filter, Fuel, Inline, Kubota V1505, DH902..... | 750401059-C0 |
| Muffler Kit Kubota, DH902 S-940 | 770301022-00 |
| Gasket, Muffler Kubota, V1505..... | 770301007-C0 |
| Filter, Oil, Kubota D902 | 770401110-C0 |

Hydraulic Accessories

| | |
|--------------------------------|-----------|
| Hydraulic Filter | 750701073 |
| SLS Cylinder | 750101070 |
| Pivot Elevation Cylinder..... | 750101079 |
| Fixed Elevation Cylinder | 750101078 |
| Hydraulic Pump..... | 750901015 |

Head Accessories

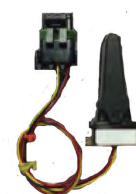
| | |
|---|-----------|
| 10ft Double Flight Auger | 720602759 |
| 8ft Double Flight Auger | 720602787 |
| Auger Motor..... | 750801052 |
| Auger Bearings..... | 740101090 |
| Auger Bearing Guards | T1145 |
| Compression Springs | 20959 |
| Vibrator Motor | 750801042 |
| Vibrator Drive Assy Centaflex | 700301549 |
| Vibrator Motor Mount Plate..... | 720507564 |
| Dolly Wheel Head Rotate Kit | 700501364 |
| Weldment Isolator and Link Floating Vibrator..... | 720603142 |
| Assembly, Four Bar Linkage Vibrator..... | 700601138 |
| Weldment, D-Pin Head Assembly..... | 720603160 |



AS212-S Dual Axis Sensor



E-Stop



Paddle Joystick

S-940 Gold and Silver Kits**PREPARATION IS KEY:**

Contained in a durable waterproof carry case, the Emergency Support Kits have been carefully designed to assist easy fix solutions provided by Somero® Engineers when pressure is at its greatest. [Since introduction, the kits have proved invaluable in avoiding machine downtime, unplanned stop ends, and pour cancellations, providing cheap insurance and peace of mind to our customers.] Emergency Support Kits are available to suit all budgets with our Gold and Silver Editions.

SILVER KIT**Part Number: 700501360**

| | |
|-----------|--|
| 740801669 | Heavy Duty Case |
| 20356 | Grease Fitting, 1/4-28, 90 Deg. |
| 20363 | Grease Fitting, Straight, 1/4-28 Taper |
| 710101297 | Paddle Joystick Assy OEM |
| 710101521 | Switch Assy, Operator Presence, S-940 |
| 710101522 | Switch Assy, Timed Raise/Lower, S-940 |
| 710401241 | Voltage Regulator, Robin 20.5HP, 30A, HiTempSolder |
| 710401336 | Relay, Picker SPDT Cube 12VDC 40/30 Amp |
| 710601119 | Coil Cord, SSR/SSR2 |
| 711001026 | Actuator, Rocker Switch, Rubber Carling Contura II |
| 711601067 | E-Stop, Compact NO/NC 40 mm Twist Release |
| 740101044 | Bearing, 2-Bolt, SFT-12T, XD |
| 740101090 | Bearing, Auger 1 7/16ID Contact Seal/Zerk@45 Deg |
| 740801665 | Bushing, Flanged, 1/2" ID, 3/4" OD, Lenth 1/2" |
| 740801834 | Bushing, Flanged 1/2 ID x 3/4" OD x 5/8 L |
| 750701073 | Filter Element, MP Filtri, MF0203A10HB |
| 750801042 | Vibrator motor, .067 CIR, 7/16" key shaft, XD |
| 750801052 | Auger Motor, SXP, SXPD, S-22E, S-840, S15R |
| 770401022 | Air Filter Element 18hp Robin 263-32610-A1 |
| 770401023 | Oil Filter, Robin 18.5hp & 20.5 Eng. 248-65801-10 |
| 770401076 | Spark Plug NGK:BPR5ES for Robin 20.5hp EH650 |
| 20004-068 | Hyd Hose 1/4 X 68 |
| 20006-095 | Hyd Hose 3/8 X 95 |
| 20008-060 | Hyd Hose 1/2 x 60" |
| 20010-080 | Hyd. Hose 5/8" x 80" 3000psi |

GOLD KIT**Part Number: 700501361**

| | |
|-----------|--|
| 740801669 | Heavy Duty Carry Case |
| 20356 | Grease Fitting, 1/4-28, 90 Deg. |
| 20363 | Grease Fitting, Straight, 1/4-28 Taper |
| 710101297 | Paddle Joystick Assy OEM |
| 710101521 | Switch Assy, Operator Presence, S-940 |
| 710101522 | Switch Assy, Timed Raise/Lower, S-940 |
| 710401241 | Voltage Regulator, Robin 20.5HP, 30A, |
| 710401336 | Relay, Picker SPDT Cube 12VDC 40/30 Amp |
| 710601119 | Coil Cord, SSR/SSR2 |
| 710601234 | Cable, AS212-S, S-940 |
| 711001026 | Actuator, Rocker Switch, Rubber Carling Contura II |
| 711601067 | E-Stop, Compact NO/NC 40 mm Twist Release |
| 740101044 | Bearing, 2-Bolt, SFT-12T, XD |
| 740101090 | Bearing, Auger 1 7/16ID |
| 740404038 | Threaded Rod, 5/16 - 24x2", 95412A609 |
| 740501037 | Fuel Filter Inline Bosch 20 Micron |
| 740801331 | Cotter Pin, .125 Wire, Double Loop |
| 740801413 | Isolator, ext vib, Tech Product 51303, XD 2.0 |
| 740801665 | Bushing, Flanged, 1/2" ID, 3/4" OD, Lenth 1/2" |
| 740801834 | Bushing, Flanged 1/2 ID x 3/4" OD x 5/8 L |
| 740801732 | Key Vibrator Motor 1/8 x 1/8 x 3/4" |
| 740801794 | Grease Fitting, 1/8" BSPP |
| 740901004 | Seal, wheel drive guard, McMaster |
| 740901005 | Edge seal, wheel dr grd, McMaster |
| 750701073 | Filter Element, MP Filtri, MF0203A10HB |
| 750801042 | Vibrator motor, .067 CIR, 7/16" key shaft, XD |

**S-940 GOLD AND SILVER KITS**

| | |
|-------------|---|
| 750801052 | Auger Motor, SXP, SXPD, S-22E, S-840, S15R |
| 770401022 | Air Filter Element 18hp Robin 263-32610-A1 |
| 770401023 | Oil Filter, Robin 18.5hp & 20.5 Eng. 248-65801-10 |
| 770401076 S | park Plug NGK:BPR5ES for Robin 20.5hp EH650 |
| T1145 | GUARD, AUGER BEARING SEAL, |
| 20004-035 | HYD. HOSE 1/4 X 35 |
| 20004-068 | HYD. HOSE 1/4 X 68 |
| 20006-095 | HYD. HOSE 3/8 X 95 |
| 20008-060 | Hyd Hose 1/2 x 60" |
| 20010-080 | Hyd. Hose 5/8" x 80"3000psi |
| 20009 | PRESSURE GAUGE, 0-5,000 PSI, 2-1/2" PANEL MOUNT |
| 20064-0404 | HYD FTG ADAPTER, 4 M JIC TO 4 F NPT |
| 20959 | COMPRESSION SPRING,AUGER BEARING GUARD |
| 20468 | KEY, 1/4" SQ. X 1" LONG |
| 711301072 | SSR2 Laser Receiver w/Case |
| 711601034 | Rocker Switch, VJD1 DPDT Carling w/ I.D. Decal |
| 711601035 | Rocker Switch, VLD1 DPDT Carling w/ I.D. Decal |
| 720603160 | Weldment, D-pin Head Assembly, S-840 |

S-15R Gold and Silver Kits

PREPARATION IS KEY:

Contained in a durable waterproof carry case, the Emergency Support Kits have been carefully designed to assist easy fix solutions provided by Somero® Engineer when pressure is at it's greatest. Since introduction, the kits have proved invaluable in avoiding machine downtime, unplanned stop ends and pour cancellations, providing a cheap insurance and peace of mind to our customers.



SILVER KIT

700501323

Rugged Waterproof Carry Case with Foam Inserts, Hitch Pin Cotter, Vibrator Motor, Vibrator Key, Paddle Joystick, Operator Presence Switch Assy Operator Presence, Thumb Switch Assy Auto-Raise, Timed Lower, SSR Coil Cord, Angle Sensor Cable, Various Switches and Covers, E-Stop, Auger Bearings, Clamp Assembly, Fan Belt, Kubota V1505, Element - Return Filter, Air Cleaner Element, Outer, Kubota V1505, Inner Air Cleaner, Oil Filter, Fuel Filter, Fuel Filter, Hydraulic Filter, Head Lift Valve, and Auger Motor.

GOLD KIT

700501324

Rugged Waterproof Carry Case with foam inserts, Hitch Pin Cotter, Vibrator Motor, Vibrator Key, Paddle Joystick, Operator Presence Switch Assy Operator Presence, Thumb Switch Assy Auto-Raise, Timed Lower, SSR Coil Cord, Angle Sensor Cable, Various Switches and Covers, E-Stop, Auger Bearings, Clamp Assembly, Fan Belt, Kubota V1505, Element - Return Filter, S-15M, Air Cleaner Element, Outer, Kubota V1505, Inner Air Cleaner, Oil Filter, Fuel Filter, Fuel Filter, Hydraulic Filter, Head Lift Valve, Auger Motor, Auger Bearing Guards, and Spare Receiver.



S-15R

Head Accessories

| | |
|--------------------------------|-----------|
| 8ft Double Flight Auger | 720602787 |
| 10ft Double Flight Auger | 720602759 |
| Auger Bearings..... | 740101090 |
| Auger Bearing Guards..... | T1145 |
| Vibrator Motor | 20192 |
| Vibrator Beam | 720509687 |
| Shaft Motor End | 720508679 |
| Shaft Middle Pods | 720508680 |
| Shaft End Pods..... | 720508827 |
| Rubber Mounts..... | 20377 |
| Auger Motor..... | 750801052 |
| Vibrator Deam 10ft..... | 720511118 |

Hydraulic Accessories

| | |
|--|-----------|
| Hydraulic Filter..... | 750701073 |
| SLS Cylinder | 750101070 |
| Fixed Elevation Cylinder | 750101078 |
| Pivot Elevation Cylinder..... | 750101079 |
| Hydraulic Pump..... | 750901033 |
| Stabilizer Cylinder..... | 750101086 |
| Shaft, Transfer Remote Motor 10ft..... | 720511161 |
| Shaft, Transfer Remote Motor 8ft..... | 720509818 |



Hydraulic Filter

SLS Cylinder

Auger Motor

Auger Bearing

Auger Guard

Compression Spring



S-15R

Laser Gear Accessories

| | |
|--------------------------------|-----------|
| SSR2 Receiver | 711301072 |
| SSR Receiver Cable | 710601119 |
| AS212-S Dual Axis Sensor | 711301068 |

Electrical Accessories

| | |
|--------------------------------|-----------|
| Dash Display | 710101500 |
| Paddle Joystick | 710101297 |
| Timed Raise Lower Switch | 710101299 |
| Operator Presence Switch | 710101298 |
| E-Stop | 711601068 |

Engine Accessories

| | |
|---------------------------|-----------|
| Air Filter Outer | 750401055 |
| Air Filter Inner | 750401056 |
| Oil Filter | 750401057 |
| Fuel Filter Spin On | 750401058 |
| Fuel Filter Inline | 750401059 |
| Fan Belt | 740801705 |



SSR2 Receiver



Paddle Joystick



E-Stop



AS212-S Dual Axis Sensor



SP-16 Gold & Silver Kits

PREPARATION IS KEY

Contained in a durable waterproof carry case, the Emergency Support Kits have been carefully designed to assist easy fix solutions provided by Somero® Engineers when pressure is at its greatest. Since introduction, the kits have proved invaluable in avoiding machine downtime, unplanned stop ends, and pour cancellations, providing a cheap insurance and peace of mind to our customers.

SILVER KIT

700501396 4" System OR 700501399 5" System

Remote Tether Cable, Grease Fittings, Grease with Grease Gun, Fuses, Relays, Switches, Master Chain Link, (2) Hose Pans, Tool Bag, Steering Rod, Snap Coupling Safety Pins, Thrust Ring, Swivel Gasket, Snap Gasket, Snap Coupling Pins, Fuel Filter, and Air Filter.

GOLD KIT

700501397 4" System OR 700501400 5" System

Remote Tether Cable, Grease Fittings, Grease with Grease Gun, Fuses, Relays, Switches, Master Chain Link, (2) Hose Pans, Tool Bag, Steering Rod, Snap Coupling Safety Pins, Thrust Ring, Swivel Gasket, Snap Gasket, Snap Coupling Pins, Fuel Filter, Air Filter, Rotation Sensor, Hydraulic Hoses, Chute Rotation Shims, and Chute Rotation Pads.

SP-16

| | |
|---|--------------|
| 5" Conversion Kit..... | 700301695 |
| Standard Tire/Wheel Assembly (Turf Tire) | 700801086 |
| Tire/Wheel Assy SP-16 8ply Turf w/ Tireballs..... | 700801087 |
| Hose Pan Assembly | 700501099 |
| Tire/Wheel Assy, Super Lug, SP-16, Left..... | 700801083-00 |
| Tire/Wheel Assy, Super Lug, SP-16, Right..... | 700801084-00 |
| SP-16 Silver Kit 4" System Placer / Puller | 700501396-00 |
| SP-16 Silver Kit 5" System Placer / Puller | 700501399-00 |





STS-11M Gold and Silver Kits

PREPARATION IS KEY:

Contained in a durable waterproof carry case, the Emergency Support Kits have been carefully designed to assist easy fix solutions provided by Somero® Engineers when pressure is at it's greatest. Since introduction the kits have proved invaluable in avoiding machine downtime, unplanned stop ends, and pour cancellations, providing a cheap insurance and peace of mind to our customers.

SILVER KIT

700501311

Joystick, Operator Presence Switch, Auto Spread Switch, Relays, and Various Electrical

GOLD KIT

700501324

700501312

Joystick, Operator Presence Switch, Auto Spread Switch, Relays, Various Electrical Switches and Covers, Boom Potentiometer, Fan Belt, Oil Filter, Air Filter, Fuel Filter, Inline Fuel Filter, Return Filter, Various Cartridges, Bearings, and Fuel Pump.

STS-11M

Electrical Accessories

| | |
|-------------------------------|-----------|
| Paddle Joystick..... | 710101297 |
| Operator Presence Switch..... | 710101298 |
| Timed Raise Lower Switch..... | 710101299 |
| E-Stop | 711601068 |
| Relay..... | 20901 |

Engine Accessories

| | |
|---------------------------|-----------|
| Air Filter Outer..... | 750401055 |
| Air Filter Inner | 750401056 |
| Oil Filter | 750401057 |
| Fuel Filter Spin On | 750401058 |
| Fuel Filter Inline | 750401059 |
| Fuel Pump..... | 710401332 |
| Fan Belt..... | 740801705 |

Head Accessories

| | |
|--------------------------------|-----------|
| Drum Motor | 50801010 |
| Drum Weldment..... | 13204 |
| Drum Weldment Studs..... | 20894 |
| Brush Rear Head Assembly | 720508073 |
| Brush Side Head Assembly..... | 720508069 |



Air Filter Inner



Air Filter Outer



Oil Filter



Paddle Joystick



E-Stop

S-22E Gold and Silver Kits

PREPARATION IS KEY:

Contained in a durable waterproof carry case, the Emergency Support Kits have been carefully designed to assist easy fix solutions provided by Somero® Engineers when pressure is at it's greatest. Since introduction the kits have proved invaluable in avoiding machine downtime, unplanned stop ends and pour cancellations, providing a cheap insurance and peace of mind to our customers.



SILVER KIT

700501313

Rugged Waterproof Carry Case with foam inserts, Auger Bearing Guard, Compression Springs, Auger Bearings, Oil Filter, Multi-Meter, Hub Caps, Hydraulic Fittings Kit w/ Fuses, Column Clamp, Tripod Kit, Receiver Adapter Head Harness, Auxiliary Cable Emergency By-Pass, By-Pass Adapter for Boom Cable Head Side, 2 Bolt Bearing, and Spare Hose Kit S-22E.

GOLD KIT

700501324

Rugged Waterproof Carry Case with Foam Inserts, Auger Bearing Guard, Compression Springs, Auger Bearings, Oil Filter, Multi-Meter, Hub Caps, Hydraulic Fittings Kit w/ Fuses, Column Clamp, Tripod Kit, Receiver Adapter Head Harness, Auxiliary cable Emergency By-Pass, By-Pass Adapter for Boom Cable Head Side, 2 Bolt Bearing, Spare Hose Kit S-22E, Laser Receiver, LR212—s, Straight end coil cable, Steer Sensor Cable, Stabilizer Directional Cartridge, Stabilizer Counterbalance, Fuel Filter, Alternator Belt, Air Filter Primary, Air Filter Secondary, Centaflex Element, Rocker Switches and Covers, and Actuator Removal Tool.



S-22E

Head Accessories

| | |
|--|-----------|
| 12ft Double Flight Auger | 720601691 |
| 14ft Double Flight Auger | 720601909 |
| Auger Bearing | 20505 |
| Auger Bearing Guard | 11769 |
| Compression Spring | 20448 |
| Vibrator Bearing (John Deere without Vib Shoe) | 740101044 |
| Vibrator Bearing (Deutz with Vib Shoe) | 740101091 |
| Centaflex Element | 24414 |
| Rubber Mounts | 20377 |
| Auger Motor | 750801052 |
| Vibrator Motor | 20192 |

Roller Plow

| | |
|-------------------------------------|-----------|
| RollMotor | 750801072 |
| 12ft Roller Plow Right | 720602736 |
| 12ft Roller Plow Left | 720602737 |
| 12ft Rubber Wiper Roller Plow | 760401007 |
| 14ft Roller Plow Right | 720602800 |
| 14ft Roller Plow Left | 720602801 |
| 14ft Rubber Wiper Roller Plow | 760401008 |
| Roller Plow Bearing | 740101082 |
| Roller Plow Bearing Guard | T1145 |
| Compression Springs | 20959 |
| Middle Bearing Guard | 740801745 |



Centaflex Element



Vibrator Bearing



Auger Bearing



Auger Guard



Roller Plow Auger Guard



Compression Spring



S-22E

Laser Gear Accessories

| | |
|--------------------------------|-----------|
| AS212-S Dual Axis Sensor | 711301068 |
| LR212-S Receiver | 711301078 |
| LR212-S Receiver Cable..... | 710601127 |

Electrical Accessories

| | |
|----------------------------------|------------|
| Dash Display | 710101425 |
| Left or Right Hand Joystick..... | 710401333 |
| E-Stop | 711601068 |
| Head Light Assembly..... | 20714-assy |

Hydraulic Accessories

| | |
|--------------------------------------|-----------|
| Hydraulic High Pressure Filter | 750701189 |
| Hydraulic Return Filter | 750701297 |
| SLS Cylinder | 750101070 |
| Pivot Elevation Cylinder..... | 750101091 |
| Hydraulic Pump..... | 750901014 |
| Stabilizer Cylinder | 11630-002 |



Dash Display



SLS Cylinder



E-Stop



Joystick



LR212-S



AS212-S Dual Axis Sensor

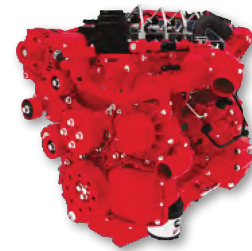


S-22E CUMMINS

CONSULT PARTS MANUAL FOR YOUR ENGINE MODEL

Engine Accessories

| | |
|-----------------------------|-----------|
| Air Filter Primary | 770201073 |
| Air Filter Secondary | 770201074 |
| Oil Filter | 770201072 |
| Primary Fuel Filter | 770201070 |
| Secondary Fuel Filter | 770201071 |
| Alternator Belt..... | 770201069 |



Cummins QSF2.8 Engine

S-22E DEUTZ

CONSULT PARTS MANUAL FOR YOUR ENGINE MODEL

Engine Accessories

| | |
|----------------------------|-----------|
| Air Filter Primary | 770201021 |
| Air Filter Secondary | 770201022 |
| Oil Filter | 20839 |
| Fuel Filter | 770201036 |
| Alternator Belt..... | 770201038 |
| Catalytic Muffler..... | 740801795 |



Deutz Tier 4 Interim Engine

S-22E JOHN DEERE

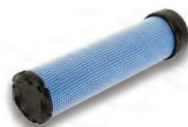
CONSULT PARTS MANUAL FOR YOUR ENGINE MODEL

Engine Accessories

| | |
|----------------------------|-----------|
| Air Filter Primary | 770201021 |
| Air Filter Secondary | 770201022 |
| Oil Filter | 770201020 |
| Fuel Filter | 770201018 |
| Alternator Belt..... | 770201026 |
| Catalytic Muffler..... | 740801634 |



John Deere 4024 Engine



Air Filter Inner



Air Filter Primary



Oil Filter John Deere



Alternator Belt

LASER GEAR AND ACCESSORIES



Laser Transmitters

For use with LR212-S receivers

GL722-SV 711301080
Dual Slope Transmitter with Handheld Receiver and Remote

For use with all Somero Equipment except LR212-S receiver

GL722-S 700301068
Dual Slope Transmitter with Handheld Receiver and Remote

For use with Small Line Somero Equipment and S-15/S-10A Laser Screens Except GCR Receivers

GL622 711301073
Dual Slope Transmitter with Handheld Receiver and Remote

For use with all Somero equipment except LR212-S receivers

LL500 711301033
Flat Nonsloping Transmitter with Handheld Receiver

Recommended for: MSC, XD1, XD2, XD3, S485, S840, S-15R

Handheld Receivers

CR600 711301050

HandheldReceiverClamp 710401289

Recommended for use with CR600, HL700 & HL750

HL700 711301069

Recommended for use with LL500 & GL422-S

HL750 711301071

Recommended for use with GL622

Transmitter Mounts, Tripods & Accessories

Column Clamp 700301411

Wooden Tripod Leg Set, 8ft 20279

Elevating Base Threaded Mounting 20278

Fiberglass Tripod with Dual Lock Knobs 700301398

Quick Disconnect Adapter 20943

Quick Disconnect Kit for Transmitter 20942



GL722 Dual Grade Laser GL622 Dual Grade Laser LL500 Single Grade Laser



CR600 Receiver



HL700 Receiver



HL750 Receiver



8ft Tripod
w/ Elevating Base



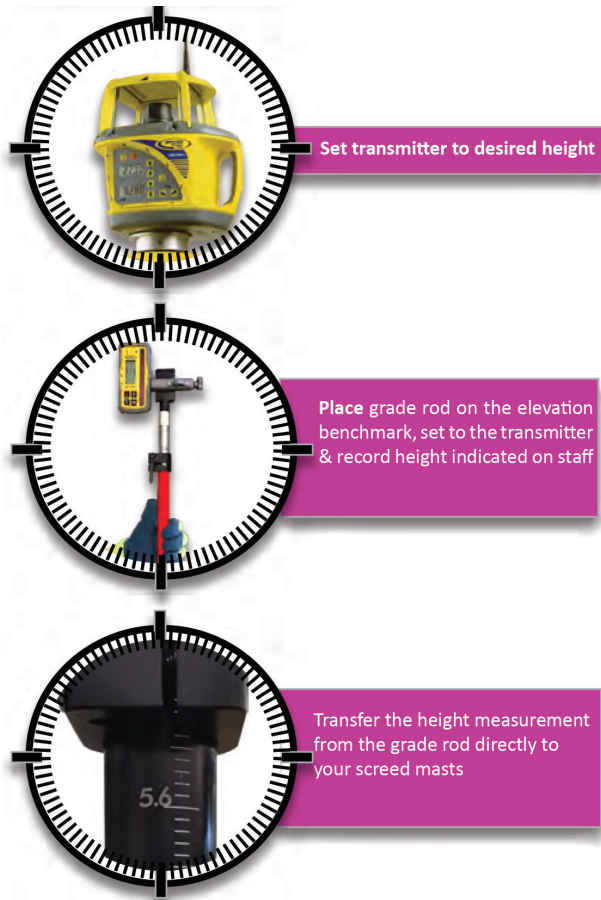
Fiberglass Tripod



Column Clamp

GRADE, SET, & MATCH

HOW IT WORKS



KIT CONTAINS: 2x etched anodized mast tubes, 2x collars, and installation instructions.

SOMERO® QUICK GRADE SET™

An innovative evolution of our grade rod and mast makes transferring grade jobsite benchmark to your Somero equipment easier than ever. Available for MSC, Copperhead, S-485, S-840, S15, S-22E, S-10A, and S-940 Models.



QUICK GRADESET SYSTEM[®] KITS



| MACHINE | NOTES | LASER KIT | 3-D KIT |
|----------------------------|---|-----------|------------|
| LARGE LINE MACHINE | | | |
| S-22E | All | 700301575 | 700301584* |
| MID LINE MACHINES | | | |
| S-15R | 10 ft Vibrator | Standard | 700301654 |
| S-15R | 8 ft Vibrator with Full Bore Elevation Cylinders | 700701237 | 700301654 |
| S-15R | 8 ft Vibrator with Partial Bore Elevation Cylinders | 700701221 | 700301674 |
| S-15M | All | N/A | 700301674 |
| S-10A | All | Standard | 700301654 |
| SMALL LINE MACHINES | | | |
| S-940 | All | Standard | 700301654 |
| S-840 | Full Bore Elevation Cylinders (One piece masts) | 700701237 | 700301654 |
| S-840 | Partial Bore Elevation Cylinders (Two piece masts) | 700701221 | 700301674 |
| S-485 | All | Standard | 700301653* |
| CHXD3.0 | All | 700701220 | 700301653* |
| CHXD2.0 | All | 700701235 | N/A |
| MSC | All | 700701219 | 700301653* |

*Laser Quick GradeSet must be installed in order to utilize the 3-D Quick GradeSet functionality.

3-D PROFILER SYSTEM[®]

PARTS AND ACCESSORIES



Total Station

| | |
|--|-----------|
| SPS930 1/1 UTS (Global) DR Plus with MC Option..... | 711301055 |
| SPS730 3" UTS (Global) DR Plus with MC-OEM Option..... | 711301075 |

3-D Upgrade Charge Case Components

| | |
|---|-----------|
| Kenai Tablet with 3-D Profiler System [®] Software | 710101553 |
| Battery, Li-Ion, 7.4V | 710401235 |
| Battery, Li-Ion, 11.1V, UTS 3-D Profiler | 710401236 |
| Battery Charger, UTS 3-D Profiler..... | 710401242 |
| Kenai, Vehicle Charger (12/24V) | 710401393 |
| Kenai Extended Battery | 710401395 |
| Kenai Battery Charger with AC Adapter..... | 710401396 |
| Kenai Pole Mount Kit | 740801891 |
| Storage Case, 3-D Charge..... | 740801904 |
| Decal, 3-D Charge Case..... | 780101709 |
| Checklist, 3-D Profiler System [®] Kenai Tablet Upgrade..... | 700301685 |
| 3-D Decal (charge battery prior to use)..... | 780101059 |

3-D Upgrade Equipment Case Components

| | |
|---|-----------|
| MT900 with Mount, Assembly, 3-D Profiler, UTS..... | 700301234 |
| 3-D CAN to USB Module..... | 710101384 |
| Cable, Car Power, UTS 3-D Profiler..... | 710301064 |
| Cable Battery Holder UTS 3-D Profile..... | 710301067 |
| Battery Holder, UTS Power, 3-D Profiler..... | 710401237 |
| Coil Cable, Straight End 8ft | 710601127 |
| MT1000 Target with Battery | 711301083 |
| Grade Rod Survey Point, UTS..... | 740801890 |
| Storage Case, 3-D Equipment (Non-Chargeable Items)..... | 740801905 |
| Decal, 3-D Equipment Case | 780101711 |

Grade Rod

| | |
|---|-----------|
| Grade Rod Assembly (5.2' to 11.8')..... | 740801866 |
|---|-----------|

Batteries

| | |
|--|-----------|
| Li-Ion, 7.4V, UTS..... | 710401235 |
| Li-Ion, 11.1V, UTS..... | 710401236 |
| Battery Charger, UTS..... | 710401242 |
| UTS Power Supply Charger | 710101566 |
| Cable, Power Supply, UTS Charger, and 3-D Profiler | 710301152 |
| Battery Holder, UTS Power | 710401237 |

GCR-4 TO SSR UPGRADE



Upgrade your old GCR-4 laser system from the XD1 and XD2 to the latest SSR system installed on our XD3 Models.

Benefits Include:

- GCR-4 Receiver no longer available
- Service parts becoming more scarce
- Moveable On-Grade Setpoint (adjust grade point direct from the dash)
- Quick Pass
- Smoother Control

Includes the Following Items:

Control Box, SSR Receivers, Coil Cords, Dash Assembly, Wire Harness, and Oscillation Lock Valve



SOMERO[®] SERVICE AGREEMENT

GET THE BEST PERFORMANCE AND PRODUCTIVITY FROM YOUR SOMERO EQUIPMENT REGARDLESS OF LOCATION

- Perform all of the maintenance required on your machine.
- Repair small items immediately to avoid major breakdowns later.
- Ensure your operators are fully trained.
- Keep the recommended supply of emergency spares with the machine while operating.

The Somero Annual Service Agreement will help you meet all of these objectives.

The Service Agreement provides for:

Two days of onsite service or maintenance work annually with reduced rates for traveling to the customer. Also, a reduced labor rate for additional work performed.

An inspection of all your Somero machines when Customer Service Rep is on-site, with a follow-up report to alert you to any required repairs or maintenance to your fleet.

Training available at our Florida facility.

A discount on part purchases makes it easier for you to keep your emergency spare parts kit complete.*

The Annual Service Agreement is intended to provide a reduced overall cost when customers take advantage of all services. You benefit by lowering your cost of ownership. You also benefit with better performance and productivity from highly trained operators and machines that are in top running condition.

WHEN SHOULD YOU CONSIDER THE CUSTOMER SERVICE AGREEMENT

- Your operator is new and needs training.
- Your machine has been idle.
- You have a big or high tolerance job coming up.
- It has been a long time since your last job.
- Your crew is placing frequent service calls to Somero.
- The one-year warranty has expired.
- You need a large quantity of parts.
- You have multiple machines.
- You purchased a used machine.
- Your machine hasn't been looked at by a Somero Customer Service Rep for over a year.

*Excludes: All Trimble Related Products (Laser, Surveying, 3D/SiteShape) and related components), Laptop Computers and accessories, and Control System updates (Oasis, SSR, 3D/Siteshape, etc.).



GET IT DONE. GET A SOMERO.®

WWW.SOMERO.COM | 239.210.6519